

# BEACH EMERGENCY EVACUATION LIGHTS SYSTEM (BEELS)

January 22, 2020



*Caring for Your Coast*

# EVACUATION WITH PURPOSE



# EVENTS THAT REQUIRE BEACH EVACUATIONS

- Tsunami warnings
- Shark sightings
- Terrorist attacks
- Lightning strikes
- Earthquakes
- Other natural or man-made events that compromise the safety and wellbeing of beach patrons and workers on the



# EVACUATION TYPES

- Water Evacuation
- Beach Evacuation



# WHEN TO EVACUATE

## Water only Evacuation:

- Shark Sightings
- Oil Spills
- Rip Currents

## Full Beach Evacuation:

- Earthquakes
- Tsunami Warnings
- Lightning Strikes



# HOW THE DEAF RESPOND



**FLASHING  
LIGHTS**



# OUR PLANS FOR THE BEACH



# TESTING BEELS





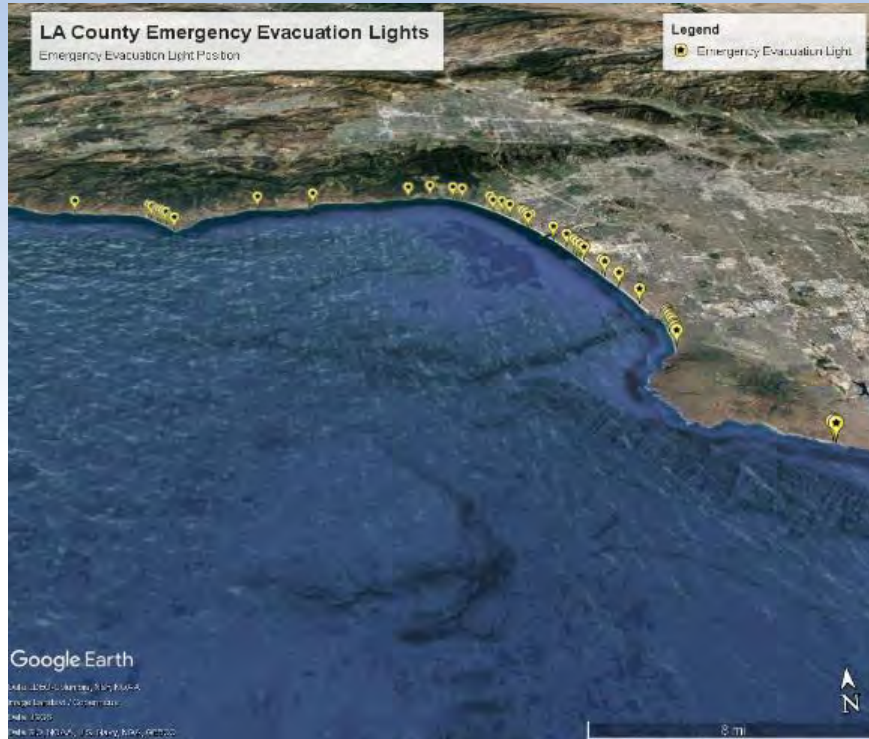
# TESTING BEELS



# AUDIO EVACUATION ALERT



# BEELES COASTAL PLAN

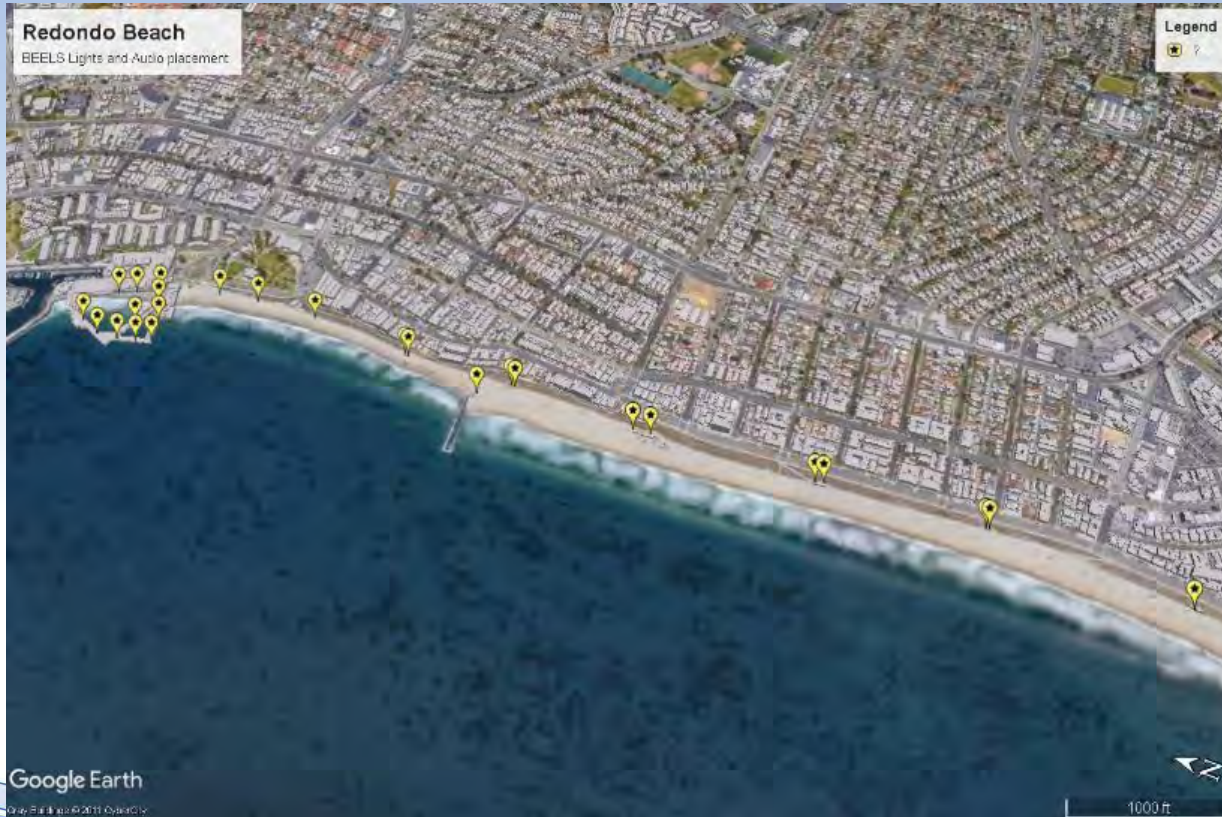


# Torrance Beach Pilot



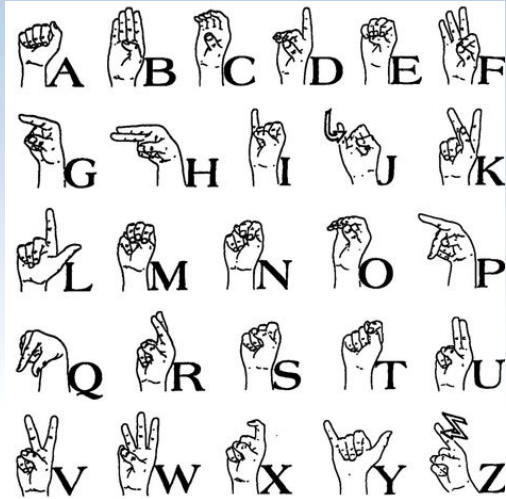


# Redondo Beach





# GETTING OUT THE MESSAGE



**EMERGENCY**  **DANGER**

 **LEAVE AREA IMMEDIATELY**  
Dangerous flood waters are coming.  
Your life is in danger!

 **NEED HELP FINDING A SHELTER?**  
Dial 2-1-1

 **IN CASE OF EMERGENCY**  
Dial 9-1-1



# DEAF COMMUNITY CHANGES



# What can be done to improve services for the deaf and hard of hearing community?

- Innovation
- Education
- Communication
- Inclusion

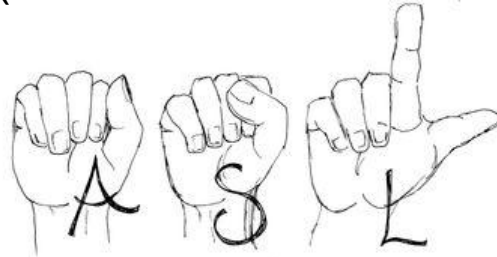


# NEXT STEPS

- City approvals
- County approvals
- Launch of pilot project at Torrance beach
- Coastal Commission Approvals
- Installation and testing
- Communication campaign
- Day at the beach celebration (deaf and hard of hearing)



-S



# Questions?

